

SERVING THE
INFRASTRUCTURE
INDUSTRY ACROSS
THE NATION



PERFECT ENGG. (MYSORE) WORKS

BRINGING YOU A GLOBAL EXPERIENCE & EXPERTISE



We have earned an international reputation for itself by ensuring long term product reliability, adopting stringent manufacturing practices as per ISO 9001 quality standards and moved forward in catering to the present and future needs of a vast range of medium to heavy fabricated structures, including the competitively priced Lighting poles and masts.



We a view to enhance our activities, ensure cent percent on time delivery, customer satisfaction and embrace the business challenges that lie ahead in the fast growing infrastructure market, PEMW has two manufacturing units at Chennai and Mysore. Both the units have adequate facility in fabricating steel structures and lighting columns as per customer requirements on par with international standards.



By using raw materials sourced from internationally reputed steel mills, supported by a dedicated workforce committed towards the varied needs of the end customer.



We are driven by a group of committed, dynamic and talented workforce supported by technical experts who always welcome challenging opportunities to continuously with innovative ideas on the edge of their inherent capabilities towards absolute customer delight.



We are well equipped with the requisite infrastructure necessary for heavy steel fabrication and manufacture of lighting columns, which includes a range of heavy duty hydraulic shearing machines, press brakes coupled with automatic welding machines and versatile material handling facilities and have a very effective tie-up for economic outsourcing, of other related manufacturing, fishing, packing and testing practices, including outbound logistics.



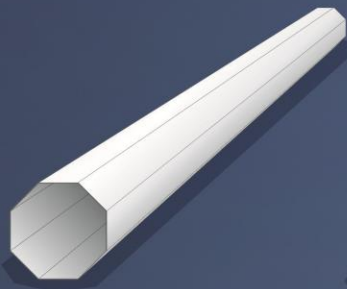
Our Personnel have worldwide experience and are experts in the industry for more than 35 years.



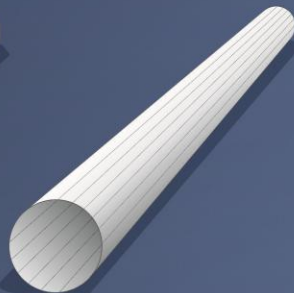
ISO 9001-2008



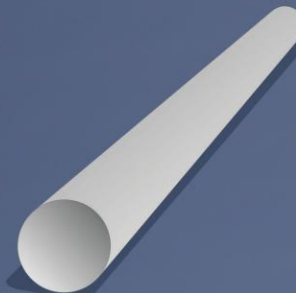
STANDARD PRODUCT SPECIFICATIONS



Octagonal Pole -Tapered



Polygonal Pole -Tapered



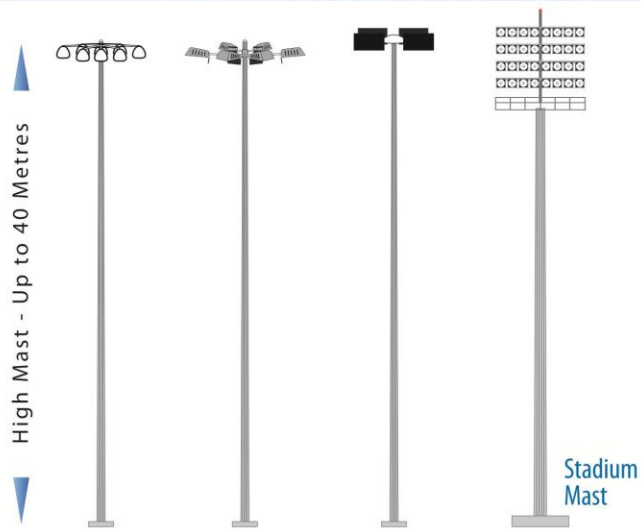
Rounded Pole -Tapered

PRODUCT RANGE

High Mast

APPLICATIONS:

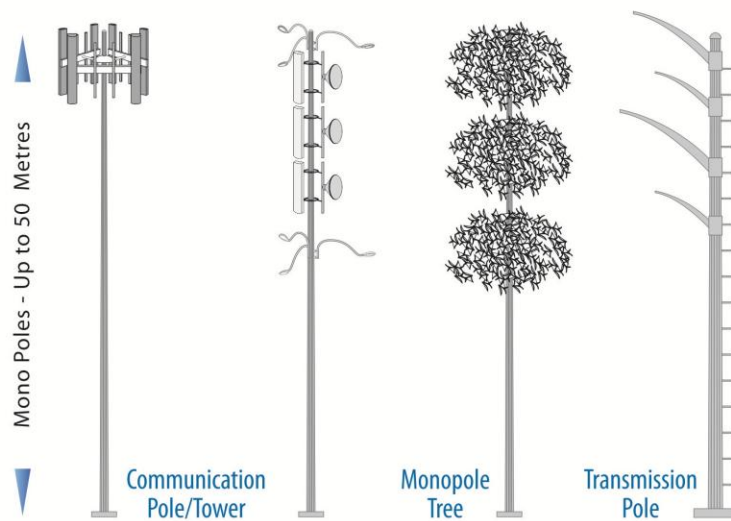
- General Area Lighting
- Yard Lighting
- Track Terminal
- Airport
- Plaza
- Highways etc.



Mono Poles

APPLICATIONS:

- Power Grid Construction
- Communication Systems
- Lightweight
- Small Space Required



Columns

APPLICATIONS:

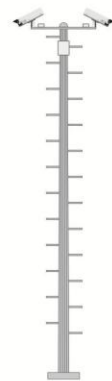
- Outdoor Sports Facilities:
 - Stadiums
 - Courts
- Major Road Intersections
- Airports
- Race Tracks



Mid-Hinged Column



Flood Lights with Climbing Rung



CCTV

Decorative Street Lights

APPLICATIONS:

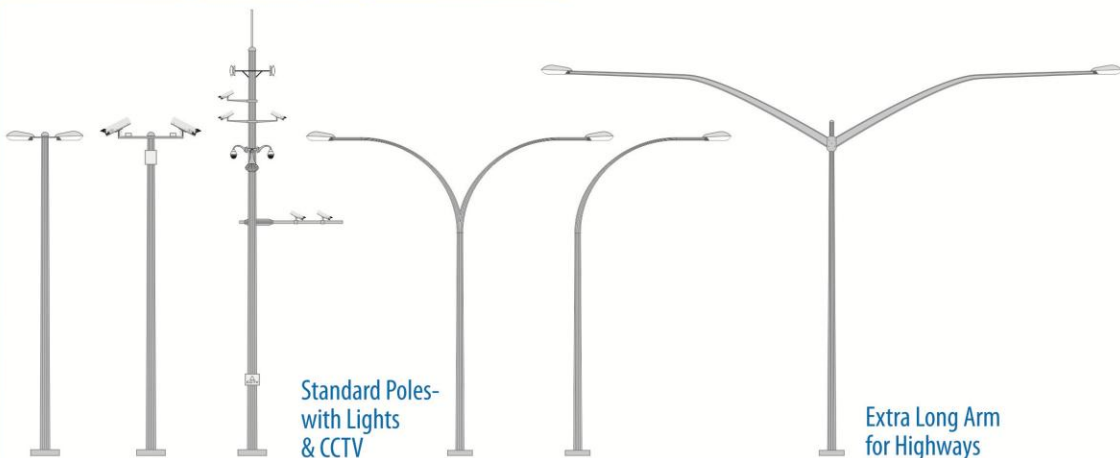
- Prestigious Venues & Roads
- Streets
- Tourist Hot Spots
- Shopping Mall areas
- Housing Areas
- Parks



Innovative Highway Lighting & CCTV Poles

APPLICATIONS:

- Main Roads
- Service Roads
- Octagonal / Tapered Round Poles
- Custom design and specs as per customer requirements available



Standard Poles-
with Lights
& CCTV

Extra Long Arm
for Highways

Innovative Traffic Poles

APPLICATIONS:

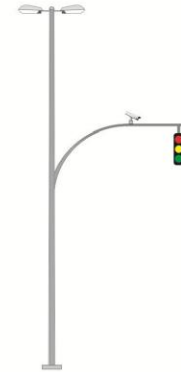
- Streets
 - Major Road Interchanges
 - Train Crossings
 - Junctions
 - Directional Aid
 - Illuminated Traffic Information
-
- Wind Speed Tolerance: Up to 300km/hr
 - Unique Design
 - Uniform & Easy Installation
 - CCTV Fittings Option



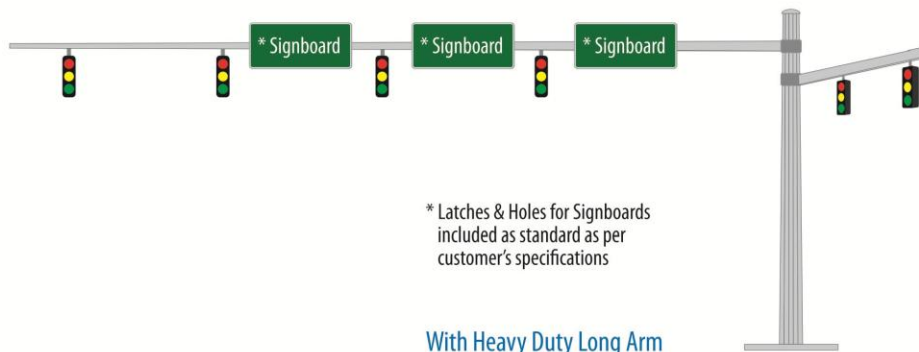
Standard Traffic Pole



Overhead Mast



Joint-Mast and Arm



* Latches & Holes for Signboards included as standard as per customer's specifications

With Heavy Duty Long Arm

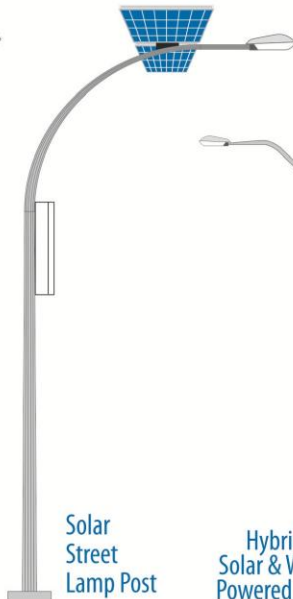
Solar Pole & Mobile Solar Pole

APPLICATIONS:

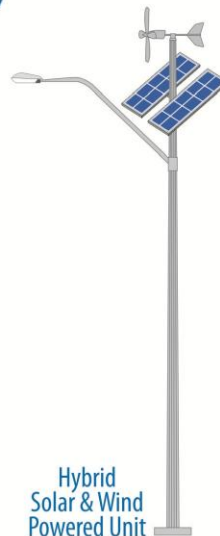
- Rural Areas
 - Can be moved to a place at a moment's notice
 - Mobile
 - Movable to any dense location
 - Site Application
-
- Unique Design
 - Uniform & Easy Assembly



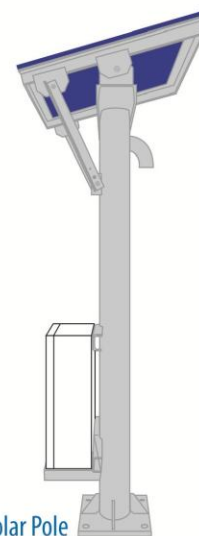
Mobile Solar Unit



Solar Street Lamp Post



Hybrid Solar & Wind Powered Unit



Solar Pole

MANUFACTURING ALL KINDS OF LIGHTING POLES

HIGH MASTS



STREET AND HIGHWAY LIGHTS



TRAFFIC POLES



MOBILE SOLAR



TRANSMISSION POLES



MONO POLES



DECORATIVE STREET LIGHTS

Decorative Poles can be used site specific for street decorations, recreational facilities, festivals and more.

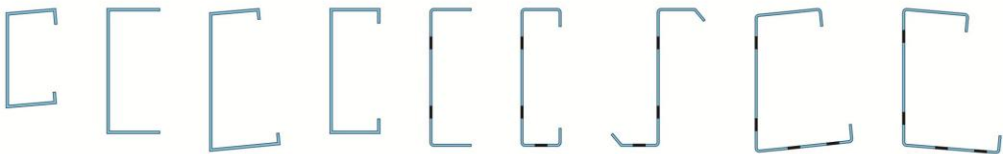


- Base Plate or in ground mounting.
- All poles are hot dip galvanized, followed by powder coating on request and/or painted to colour of choice.
- Height, outreach length and service door — site specific.
- Various finish options and profiles are also available.

Also can be undertaken:

Fabrication and Pressed Components according to the customer's specifications and drawings.

Pressed Components



Metal Fabrication



TECHNICAL SPECIFICATIONS

1. The design of masts and lighting columns are dynamically approved and verified by using (Finite Element Analysis) Designed to withstand wind speed of 35M per second. Topography, ground roughness and statistical factor of 1.0.
2. Masts are compliance to the standard specification for structural supports for highway signs, luminaires and traffic signals of the American Association of State Highway and Transportation Officials. 1994. Lighting columns comply to the British Lighting Columns Specification BS 5649.
3. Materials used for masts, lighting columns and decorative lighting columns are compliance to BS 4360 Grade 50A, BS 4360 Grade 43A and BS 1387 respectively.
4. Longitude of masts and lighting columns are seam welded conform to BS 5135 by automatic continuous Metal Inert Gas (MIG) process.
5. Both masts and lighting columns are anti-corroded by hot dip galvanized, compliance to Galvanizing Standard ISO 1461 : 1999
6. Service door dimension are given as a guide only. The engineer must satisfy himself that dimension given is adequate for the installation of the required control gears.
7. The shaft of 6M and 7M height lighting columns shall be in single section whereas the shaft of 8M to 12M height lighting columns shall be in 2 sections.

PHYSICAL DIMENSIONS FOR LIGHTING COLUMNS

TYPE	NOMINAL HEIGHT	PLANTING DEPTH P	A/F-A	A/F-B	C	D	E	F x Thk	G x HOLE	J	L
FLANGE MOUNTED	M	M	mm	mm	mm	mm	mm	mm	mm	mm	M
	6		135		305	100	150	300 x 12	220 x 26		4.2
	7		150		305	110	150	300 x 15	220 x 26	ø20 x 450L	4.2
	8		156		450	110	300	300 x 15	220 x 26		6.2
	9		166		450	115	300	300 x 15	220 x 30		7.2
	10		178		450	115	300	335 x 18	260 x 30	ø25 x 570L	8.2
	12		202		450	120	300	400 x 18	300 x 30		10.2
PLANTED	6	1.2		150	305	100	150				4.2
	7	1.2		162	305	110	150				5.2
	8	1.3		172	450	110	300				6.2
	9	1.4		183	450	115	300				7.2
	10	1.5		196	450	115	300				8.2
	12	1.7		223	450	120	300				10.2



PERFECT ENGG. (MYSORE) WORKS

Sales Office :

No.2/34, Sakthi Garden Main Road, Senneerkuppam, Chennai-56.
Ph : 044-26205157

Work Office :

No.148/7, Hunsur Mysore Road, Yelwal Post, Yelwal, Mysore-30.
Ph : 0821-2402769



scan to
catch us online

E-mail : info@pemw.in, website :www.pemw.in